

5. SEAVIEW PARK CONNECTION - PRELIMINARY

Initial routing options were developed for connection of the COLTA trail to planned active transportation corridors in the Seaview Park and Bedford Highway areas. There were several potential opportunities for such connections along with numerous challenges and uncertainties surrounding the development of potential active transportation options that have already been considered by Halifax Regional Municipality. Therefore, it was particularly important that the preferred options were confirmed by the Halifax Regional Municipality before more detailed functional design was carried out. The following sections discuss the initial options that were developed and discussed with HRM. These discussions lead to the preferred alternatives which are further detailed in Section 6 (Seaview Park Connection – Functional Design), Section 7 (Bedford Highway Connection - Preliminary), and Section 8 (Bedford Highway Connection – Functional Design).

5.1 FAIRVIEW CEMETERY

The Fairview Cemetery was identified as a preferred option for connection between the Scot Street / CN rail cut crossing and the Windsor Exchange area. The cemetery would require minimal effort to incorporate into the active transportation network, and provides an opportunity to add an aesthetically pleasing setting with historical significance, along with a safe off-road route for travel.

Figure 5-1 shows the proposed route through the main road within the cemetery connecting to Windsor Street. Figure 5-2 and Figure 5-3 show the Fairview Cemetery driveway on Windsor Street and the main thoroughfare through the Cemetery, respectively.

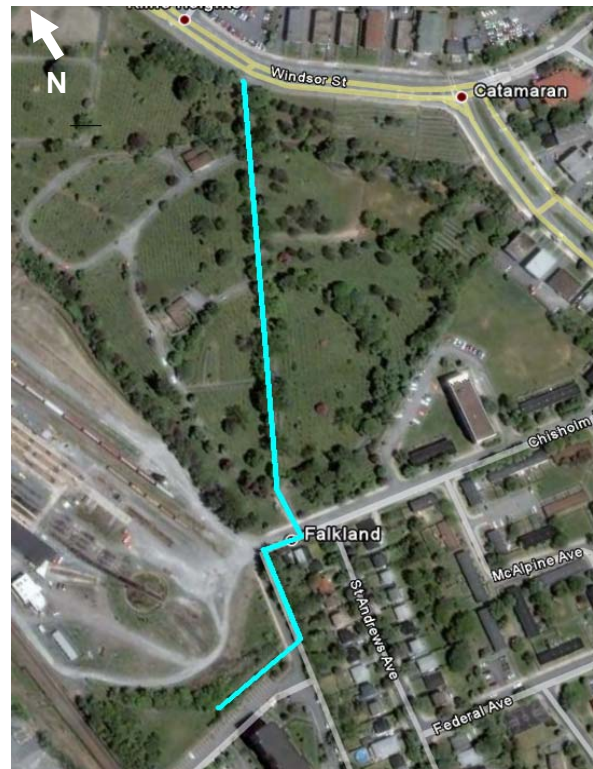


Figure 5-1: Proposed Route through Fairview Cemetery



Figure 5-2: Windsor Street



Figure 5-3: Fairview Cemetery

5.1.1 Windsor Street Exchange / Kempt Road Area

Connection of the cemetery route to points north, including Seaview Park, required consideration of multiple options due to the constraints imposed by the Windsor Exchange. The two preliminary options that were identified for connection are identified in Figure 5-4, and discussed below:

- *Bayne Street via Mackintosh Road / Lady Hammond Road / Windsor Street (green line):* This option provides access to the container terminal, and subsequently Seaview Park via the container terminal Service Road (discussed in the following section), while bypassing conflicting movements at the congested Windsor Street Exchange intersection.
- *Proposed Halifax Regional Municipality Seaview Park trail via Lady Hammond Road (green / blue line):* The proposed Halifax Regional Municipality Seaview Park trail runs along an abandoned rail line between Kempt Road and the MacKay Bridge area. The trail is a long-term vision and will likely not be implemented for several years, however, would be a potential connection to Seaview Park. A connection to the trail could be made at the abandoned rail line's Robie Street overpass, at its intersection with Lady Hammond Road. It should be noted that there may be several other potential connection options within the Kempt Road commercial area (shown in red), however, the one shown offers the most direct route.



Figure 5-4: Windsor Exchange / Kempt Road Area

5.2 CONTAINER TERMINAL SERVICE ROAD / SEAVIEW PARK

The container terminal service road, accessible via Bayne Street, has good potential for a connection between Seaview Park and the Active Transportation network, along with a potential connection to the proposed Bedford Highway “rails with trails” connection. Figure 5-5 shows the proposed alignment for both. The Seaview Park connection is shown in blue, and the Bedford Highway connection is shown in pink. There is space for road widening, if necessary, along both sides of the service road. The road runs 1.5 km between Bayne Street and the driveway to Seaview Park, and, based on feedback from Halifax Regional Municipality, this is a connection option that has considerable potential and should be pursued.

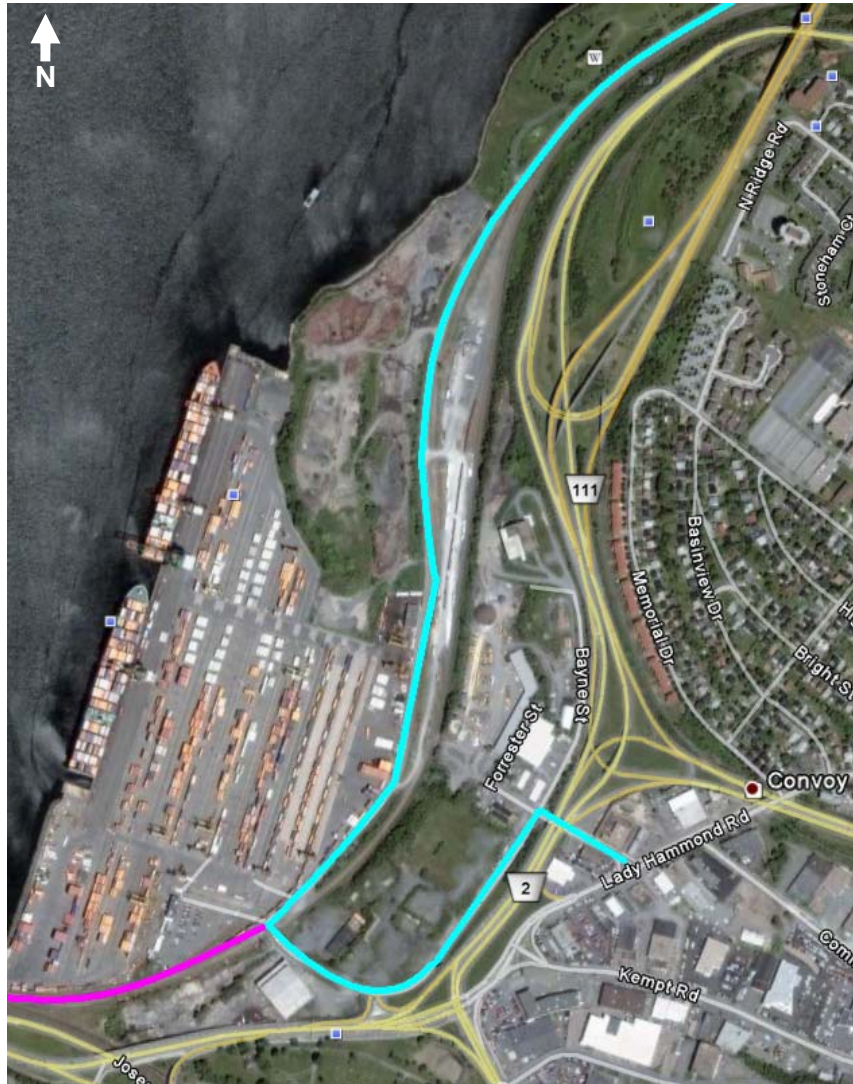


Figure 5-5: Proposed Alignment Utilizing Container Terminal Service Road

5.3 MEMORIAL DRIVE CONNECTION TO SEAVIEW PARK

As discussed in Section 5.1.1, Halifax Regional Municipality has considered a connection to the Seaview Park area that utilizes abandoned rail lines adjacent to Kempt Road and further down Memorial Drive and the MacKay Bridge approaches. Although still a long-term planning item, the route has had some functional design carried out. This previously included an active transportation bridge connecting the terminus of the existing Memorial Drive trail to green space between the MacKay Bridge approaches and Barrington Street, though during recent reconstruction in the area, this bridge has been removed and a replacement would be required in order to maintain this trail connection. The proposed alignment, shown in Figure 5-6, can provide a connection to Seaview Park along with tying into future plans for an active transportation route circumnavigating the peninsula.



Figure 5-6: Memorial Drive Active Transportation Connection